

Create Your Own Season!™

FREE Project Idea

Spider Web Frame

Supplies

- Frame
- Craft Wire
- Burlap
- Spider
- Foam Board
- Stapler
- Scissors

Directions

For this project, it is best to choose a frame that has an ornate design.

1. Measure and cut foam board to fit inside the frame.
2. Measure burlap (in a color of your choice) to fit over the foam board, wrapping it around the edges.
3. Smooth any wrinkles as you staple the burlap into the foam board to secure it.
4. Start with a very large "L" shape wire.
5. Cut several long wires and begin weaving a horizontal wire between the "L" shape wire and another vertical wire.
6. Continue weaving horizontal wires between vertical wires until you have achieved the desired look.



www.bfranklincrafts.com

Ben Franklin® Crafts & Frame Shop

MONROE LOCATION:
19505 Hwy 2, Monroe, WA 98272
360-794-6745

BONNEY LAKE LOCATION:
21121 Hwy 410, Bonney Lake, WA 98391
253-862-6822 or Toll Free: 877-824-0288

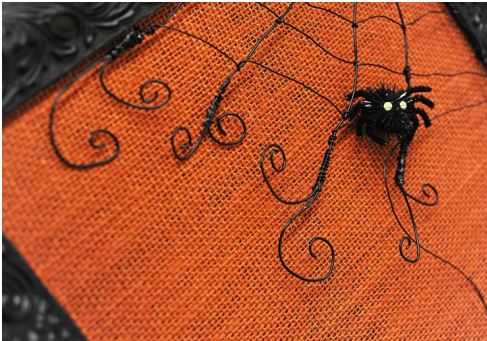


Create Your Own Season!™

FREE Project Idea

7. Use leftover wires to secure various areas of the spider web by tucking them into the frame (behind the foam board) giving the illusion of it "floating" over the burlap. This way, no gluing is necessary.
8. Finish it by adding a spider.

This would also make a very cool picture frame by simply adhering a photo to an open area of the burlap.



www.bfranklincrafts.com

Ben Franklin® Crafts & Frame Shop

MONROE LOCATION:
19505 Hwy 2, Monroe, WA 98272
360-794-6745

BONNEY LAKE LOCATION:
21121 Hwy 410, Bonney Lake, WA 98391
253-862-6822 or Toll Free: 877-824-0288

