

## Monroe & Bonney Lake stores

WASHINGTON STATE

[SEARCH](#)

### Crackling (March 06)

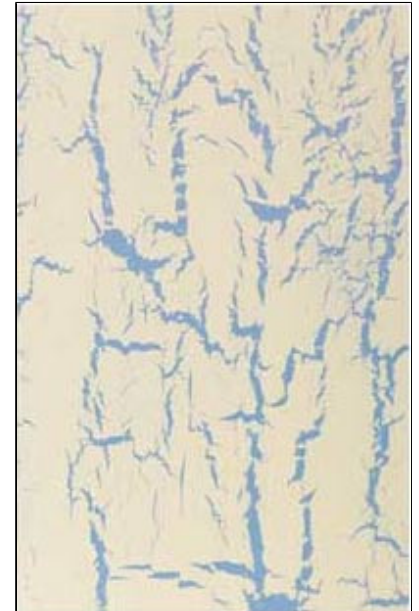
*This information was reprinted courtesy of Jeson Enterprises*

#### BASIC SUPPLIES

Crackle Medium  
Acrylic paint, base color and contrasting top color  
1" foam brush  
Varnish of choice

#### BASIC INSTRUCTIONS

1. Using the 1" foam brush, paint your wood or paper mache piece with the base color. You may spray paint the base color if desired. Apply 2 or 3 coats if necessary. Allow to dry thoroughly.
2. After the paint has dried, brush on a generous, even coat of crackle medium. Allow to dry to the touch, 20 minutes to 1 hour. Crackle medium should be tacky but not wet.
3. After crackle medium is tacky to the touch, brush on top coat of paint. (Spray paint cannot be used for the top color.) Brush paint on in even, smooth strokes. Take care not to brush over an area more than a couple of times, as the crackling effect begins immediately. The crackling will continue until the top coat of paint dries, about 20 minutes.
4. After the paint has dried thoroughly, apply 2-3 coats of varnish.



#### HINTS

- Gold paint cannot be used as the top color. It will not crackle!
- For thin delicate cracks, brush on a light top coat of paint.
- For large cracks, brush on a heavy top coat of paint.
- For spider web-like cracks, sponge top color with a spouncer brush.
- For random cracks, slip-slap top coat of paint in every direction.
- If you wish to paint, stencil, or rub-on a design over the crackled area, simply spray it with an acrylic sealer first. Then paint as usual.