

2023 Ben Franklin Saturday Sampler

Traverse Tutorial- January



Welcome to our 2023 Saturday Sampler. I love this quilt and I am so excited to work through the rows with you. If you purchased a kit using the Artisan Shot Cottons from Windham, I hope you love them as much as I do. They feel so yummy. If you are choosing your own fabrics, I can't wait to see what you picked!

Let's jump right in!

Suggested supplies for this quilt are below. I never recommend anything that I do not personally use (I will tell you if I use it or not and why) All of these supplies are available at the store.

A spray starch product. I use Best Press and Flatter. (I usually mix the unscented Best Press with a delicious scented Flatter. You get the best parts of both of them.)

A marking tool- I use a variety of things. I love the Sew Line trio pencil (it has white/pink/and graphite and refillable) I also use a regular mechanical pencil, a white chalk pencil and the clover chaco-liner pen. (it is refillable loose chalk in a wheel pen). If you have a preferred marking tool use it.

Let's talk rulers...There are a few rulers I use more than others. You will see these in my pics throughout the quilt. I love the Creative Grids 4.5" x 8.5" and the 4.5" x 12.5" those are the ones I use the most. My other favorite is the Omnigrad marking ruler trio. They are a group of 3 rulers .5" wide and 4", 6" and 12" long. I use them for checking seam allowance and marking diagonal lines on my pieces. They are just a handy straightedge to have close by. There might be a specialty ruler or two that I recommend later in the process...not required just ones you might find helpful.

Thread: Use what you love. The pattern designer suggested an 80wt thread because of the thin-ness. I love Aurifil 50wt. in a medium grey. It is strong and thin and works great in my machine.

Needles: I use a microtex sharp needle usually size 80/12. If you prefer something else it will be just fine.

This pattern is written by Tara Faughnan. She is a new designer for me, and so far I like her writing style explanations. She does very precise piecing. Please pay close attention to seam allowance size. Check at various steps through the block. With this style of piecing if your seam allowance is off by a little bit, by the end of the row it will be a big bit 😊 I will say that I have been very aware of my piecing so far and my blocks are coming out great. I guess that's what happens when you slow down and try to be precise. Tara also suggests using a 1.5-2.0 stitch length...ughhh that's tiny to pick out if you make a mistake. The thought behind it is that with all of the cutting a smaller stitch length will lock the cut seams in more. I found that I am more precise using smaller stitches. My beginning and ends are straighter. I might be convinced to use a tiny stitch length and its only the

first block! I do not include cutting instructions in these tutorials. They are designed to work with the pattern you have as additional instruction. We ask that you do not share your pattern or the tutorial with anyone not in this class. There is a lot that goes into pattern design and printing and we want everyone in that process to get the recognition and support they deserve.

Fabric: We have kits available for this quilt in the colors shown. If you would like to use your own fabrics or purchase your own fabric for this project we would love to help you with your color choices and placement. Email me at fabric@lefranklincrafts.com and we can arrange a time to design. If you are choosing your own fabrics I suggest taking a cutting of each one and taping it to the swatch chart in the book. It makes cutting each block so much easier. Pre-wash or not? That is totally up to you. I do not pre-wash but don't recommend one way or the other, it is personal preference. We keep the fabrics in the kits in the store for at least the duration of the program. If you would like an oops kit (1/8th yd of each fabric) let us know. We can get one ready for you. If you would like to use one of these fabrics as a backing let us know as soon as possible so we can order it in. If you are using the fabric kit for this quilt you will notice that these fabrics are not a traditional cotton. They are a yarn dyed shot cotton. The fabrics are dyed prior to the weaving process and they frequently woven with 2 different color of yarns so the fabric get a really awesome color effect. They do tend to ravel more easily than a standard tighter weave fabric. I suggest cutting as you go rather than pre-cutting your whole quilt.



Step 1

Read page 2 in your book. Tara tells you how to check your scant 1/4" seam allowance. Practice the steps in your book until you figure out what your machine settings need to be at to get your seam allowance. Once you have that figured out, write the settings down in your book! That way you know exactly how to get the scant 1/4" again. I know it is not a fun exciting step but it will pay off in the long run.

Step 2

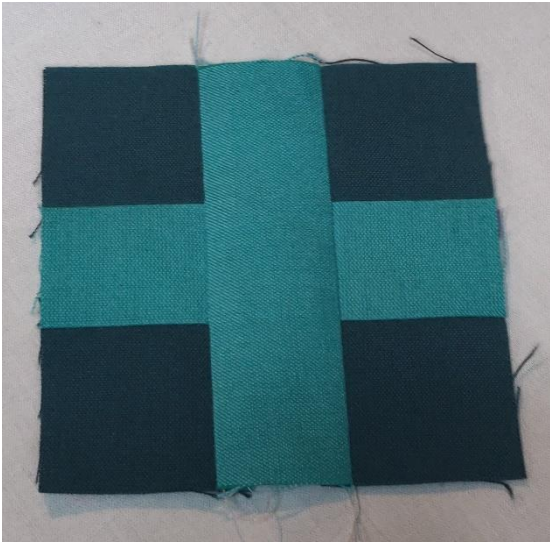


Sew the strip of fabric V to a strip of fabric S. Press to the center. Sew the other V strip to the other side of your strips. Press those towards the center also.



Cut your strip into 16 pieces.

Step 3



Sew a strip piece on each side of a piece of fabric V. Press towards the center fabric. I find it easier to chain piece all of one side then cut my joining threads and press and then go back and do all of the other side then press that as well.

Step 4



Add the piece of fabric S to the top and bottom of your plus block. Press towards the edge. Make 8 of these. This is now the width of your row.

Do this same process with fabrics S and Y. (I am missing fabric Y so I can't show you this step!)

Step 5



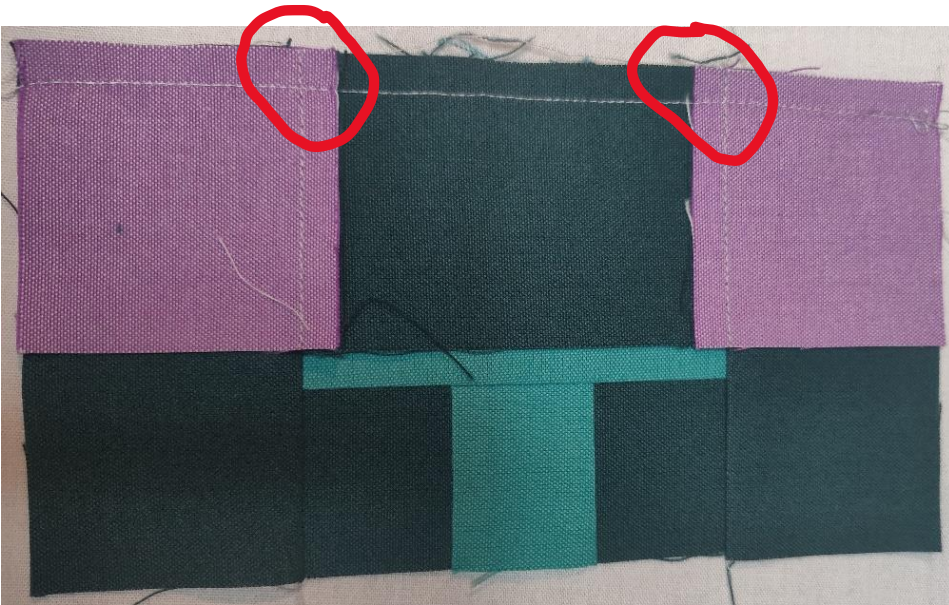
Make another strip set with fabrics S and BB. Press towards the middle on this as well.

Step 6



Cut this into 16 pieces

Step 7 (Yay this is a fun step)



Match a strip piece from Step 6 with a plus block. Because you pressed as directed the seams should nestle together perfectly at the spots circled in the picture. If they don't see if you can nudge them in the right position.

Step 8



Sew the chunks together pressing away from the plus blocks. Add a fabric S piece to each end of your row. (My row is in 2 pieces until my missing fabric arrives) If you have chosen your own fabrics, you can assemble your whole row. It should measure 6.5" x 72.5". If it doesn't don't worry we can talk about how to fix it later.

Ben Franklin[®] Crafts & Frame Shop

MONROE LOCATION:
19505 Hwy 2, Monroe, WA, 98272
360-794-6745 | www.bfranklincrafts.com

