



Quilter's Patch
 2025 Saturday Sampler
 Quilter's Corner at Ben Franklin Monroe
 June 28, 2025
 Greenhouse Block

Make your window units. I used a different background for my windows than my actual background.
 Once your windows are done build your house.



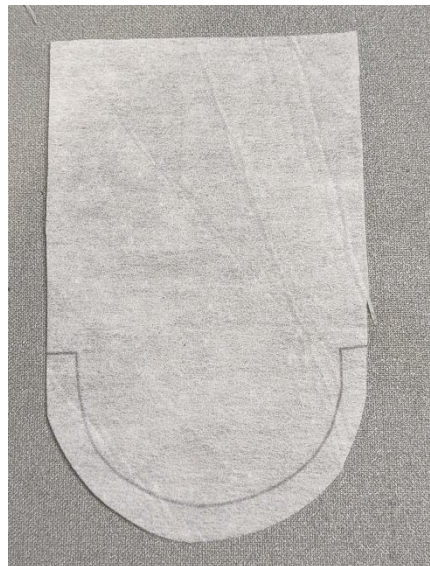
Make your shingles using the templates in your book. 20 big shingles, 20 big interfacing shingles and 20 little shingles.



Layer a big shingle with a small shingle right sides together.



Layer an interfacing shingle on top of the other 2 shingles.



Draw the sew line on your interfacing. (you can do this before you layer)

Sew on the drawn line and trim 1/8" away from the sewn line.



Turn your shingle right side out and arrange in the pattern shown in the book



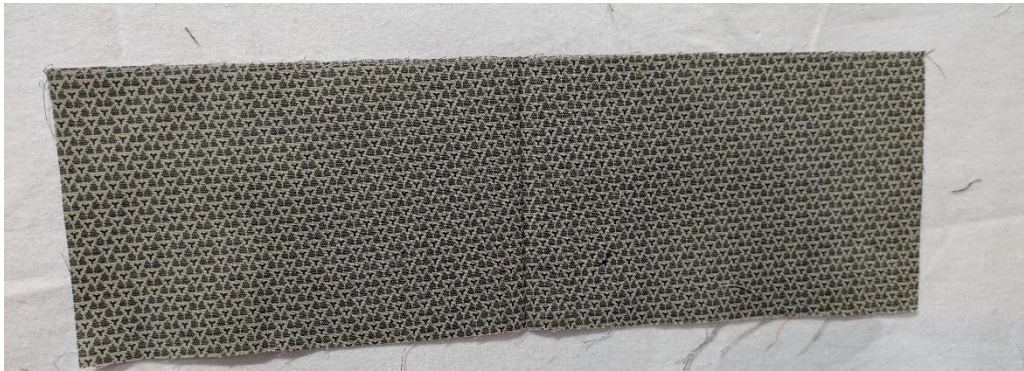
Sew your shingles together and press your seams open.



Sew your rows of shingles



Sew a stay stitch across the top of your roof base fabric. A stay stitch is just a stitched line that is right at the edge of a fabric to keep it from fraying and distorting. Fold your base in half and finger press.



Line your bottom shingle row on your base fabric with the centers lined up. Pin and draw a line as shown in your pattern. The line is measured from the bottom of the shingles not the whole roof base.



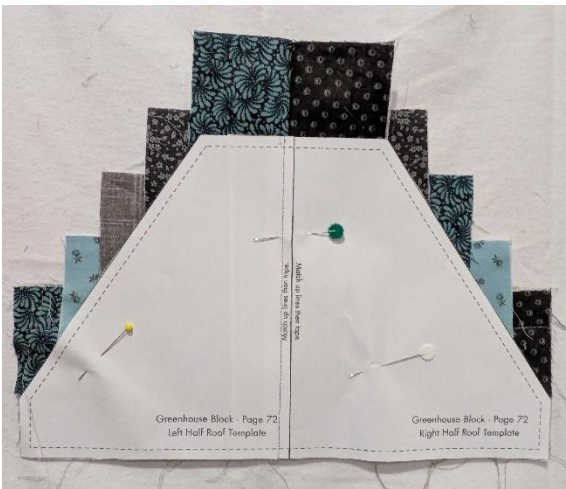
Stitch down your shingles using your favorite applique method. I straight stitched mine down.



Draw another line as shown in the book for the placement of your second row. Repeat until you have all of your rows assembled.



Cut out your roof templates from the back of your book. I copied the pieces and cut them out from there. Tape the roof base pieces together and cut your roof out.



Make your chimney strip set. Using the right background roof template cut the chimney from your strip set. Cut opposite side from the other template and background.



Sew your roof background/chimney pieces to your roof.



Assemble your house.



Ben Franklin® Crafts & Frame Shop

MONROE LOCATION:
19505 Hwy 2, Monroe, WA, 98272
360-794-6745 | www.bfranklincrafts.com



