



Quilter's Patch 2025 Saturday Sampler Quilter's Corner at Ben Franklin Monroe March 1, 2025



Tulips Block

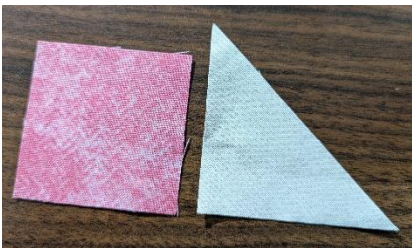
Step 1

Choose your fabrics for this block. I added a red floral in with my pink and yellow. Pay attention to the sub-cutting of the squares- if they are cut once or twice on the diagonal.



Step 2

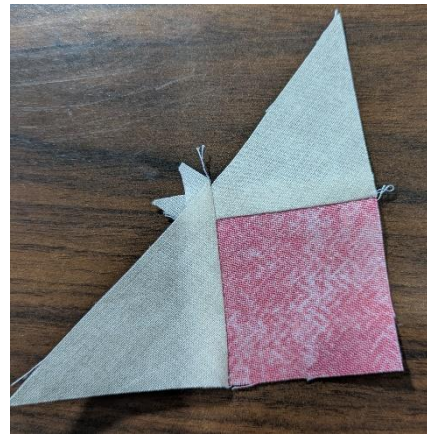
Here are my flower cuts



Sew a background triangle piece to a flower center square. I like to sew with the square facing up so the machine doesn't suck the end into the plate.



Sew



another
background
triangle to the
other side.



side of that unit.



Step 3

Add the
flower
triangles
to each



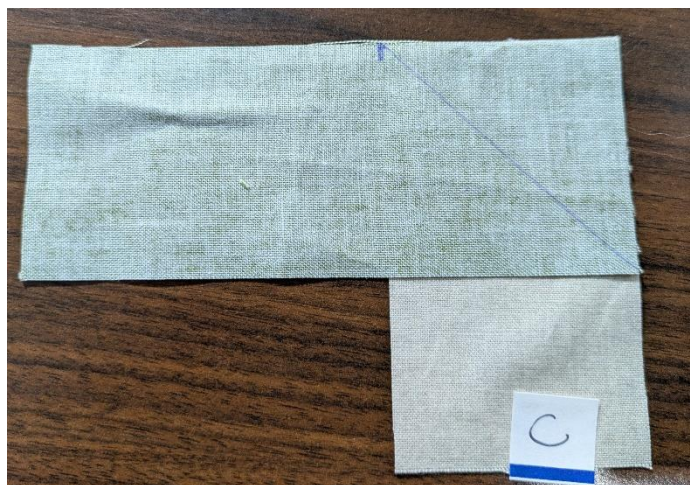
Step 4

Make your flying geese units for the bottom of each flower.

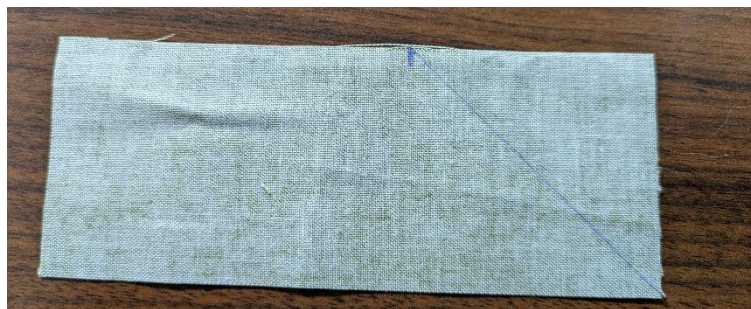


Step 5

Mark 2" from the top of a leaf fabric. Draw a diagonal line from that point to the corner.



Pair with a background and sew on that diagonal line. Trim $\frac{1}{4}$ " away from the sewn line. Press and repeat for the top part of the leaf.



Make your other leaf parts in the same way following the pattern directions.

Step 5



Add the flower base to your tulip

Assemble your pieces



Quilter's
Corner
MONROE, WA

Ben Franklin® Crafts & Frame Shop

MONROE LOCATION:
19505 Hwy 2, Monroe, WA, 98272
360-794-6745 | www.bfranklincrafts.com



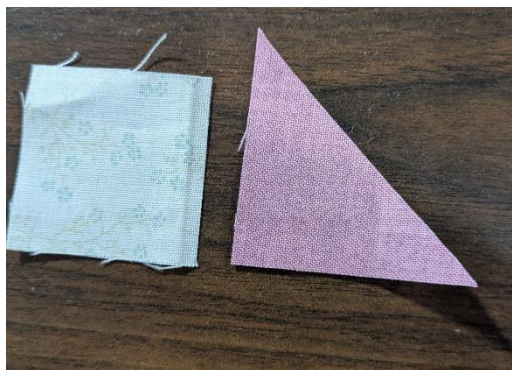
Daylily Block

Step 1

Choose your fabrics



Step 2



Sew the flower triangle to a background square. And the two triangles together.



Add triangles to each side of the flower unit.





Now add a large flower triangle to the finished triangle unit.



Step 3

Add a green sew and flip square to the bottom corner of each flower unit.



Draw a diagonal line on each green square. Place on the bottom corner of your flower unit and sew on the line. Trim $\frac{1}{4}$ " away from the sewn line and press.

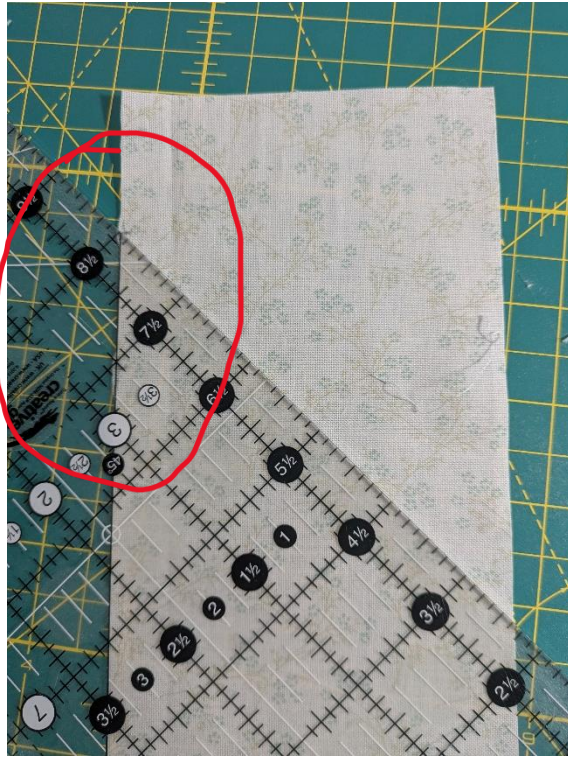


Step 4

Let's make leaf units. These are a little crazy to make but just remember that you are trimming the width down by an inch. You don't have to be exact on your piecing.



make a mark 1.5" from the top of your background piece. Make another mark 1.5" further down from there.



Line your 45 degree line on your ruler up with the side of your fabric piece. The ruler should just touch the first mark on your fabric. Cut.



Move your ruler to the next mark and cut again.

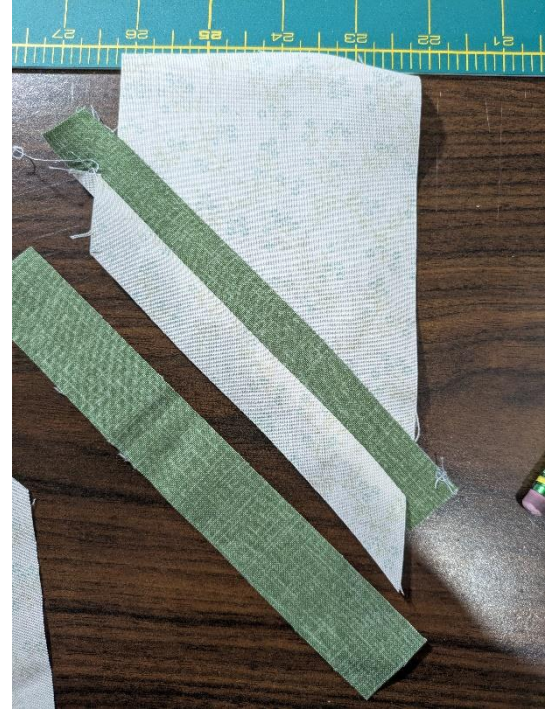


Step 5

Add your green leaf pieces



I have sewn one side of the green strip to the background. I am now lining up the background strip. Notice how it is offset a little. It needs to be in the ballpark but doesn't need to be super precise.



See how wonky mine is. It will be trimmed and will work just fine.

Trim to the size listed in your pattern and repeat for the other leaves.



Step 6

Put your flowers together.



Step 7

Assemble your block.



Quilter's
Corner
MONROE, WA

Ben Franklin® Crafts & Frame Shop

MONROE LOCATION:
19505 Hwy 2, Monroe, WA, 98272
360-794-6745 | www.bfranklincrafts.com

