

Quilter's Patch
2025 Saturday Sampler
Quilter's Corner at Ben Franklin Monroe
November 1, 2025

Cat

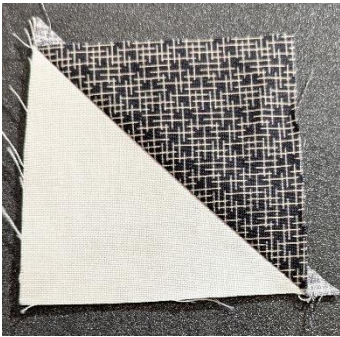
Step 1



Choose your fabrics

Step 2

Make half squares. Pay attention to the directions. Some of the half squares are sew on each side of the line and cut in the middle and some of the half squares are sew on the drawn line and cut $\frac{1}{4}$ " away from the seam.



Step 3

Assemble your cat





Clay Pots



Step 1

Cut out your pieces using the flower pot templates. You will have 3 left, 3 right and 3 centers.



Sew left and right sides



Step 2

to each pot center

Step 3

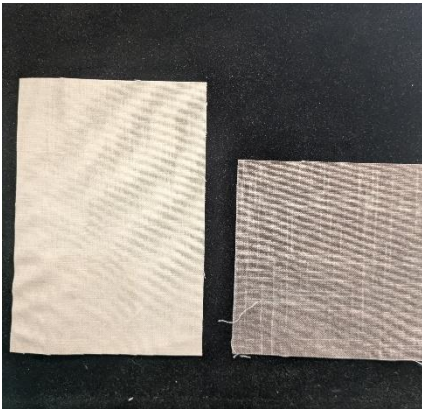


Sew 2 pots together and add your top piece. The other pot will be sewn later on.



Watering Can

The watering can is made in pieces and connected together when all of the borders are complete.



Sew and flip the bottom right

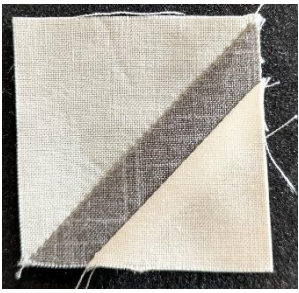


corner using your background and spout fabric



Use the same method for the rest of the spout. Connect the pieces

Make your handle using the same methods



Quilter's
Corner
MONROE, WA

Ben Franklin® Crafts & Frame Shop

MONROE LOCATION:
19505 Hwy 2, Monroe, WA, 98272
360-794-6745 | www.bfranklincrafts.com

