



Quilter's Patch
 2025 Saturday Sampler
 Quilter's Corner at Ben Franklin
 Monroe



October 4, 2025

Coneflower

Ok, Here's the scoop. I was not successful at this block. I might do it again and I might not....can't decide. I think my seam allowances were too scant. My flowers came out too big and I adjusted but still not my favorite. I heavily starched my fabrics. It made them super stiff so there was no stretching on the bias. I would highly recommend that for both blocks.

Step 1



Pick your fabrics and cut them out. I starched my fabrics first so they were stiff.

Step 2



Sew them together and stagger them so there is less waste.



Cut them on a 45 degree angle just like last month. Cut them into strips measuring just like last month.



You will need 3 of each size and 3 of just the dark pink.

Step 3

The pattern says to sew the strips together matching seams. Ummm...what seams? There was a lot of trial and error. My Seam Ripper and I are besties now....



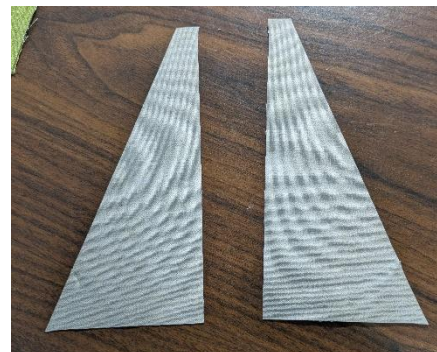
That is where you want to match seams. The point of the smaller block should hang over a bit and the end of the block should match up with a seam.



I kept going until I got this. (3 times)

Step 4

Using the template cut the side pieces from your background.
Sew them onto each side of your triangle.
Here is where I had to say Uh-Oh... My triangles were too small for my flower. So...I trimmed my flower. I was not



about to take the whole thing apart. I cut a 1/4" off each side of my flower....it was too much!



Too Big!



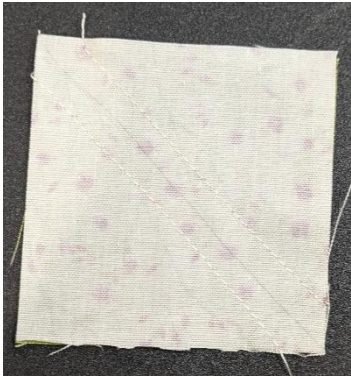
**Too small
after
trimming 1/4"**



**Just right after trimming 1/8"
each side**

I ended up trimming 1/8" off of each side and it came out ok. I also went back to my block that was too small and adjusted the side seams be very scant to help with my too small block.

Step 5



Make half squares with your leaf fabrics. Place a small square on each corner and sew and flip. Square them up.

Step 6

Assemble your block.



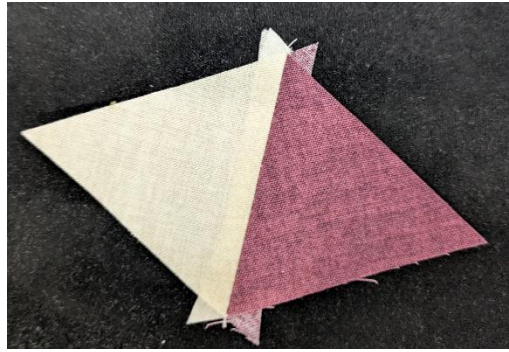
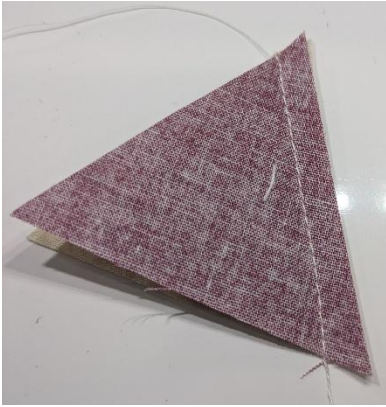
Honeysuckle Block

I heavily starched my fabrics prior to cutting. I suggest doing that to keep your fabrics from stretching.



Cut all of your triangle pieces. Line them up in the order they get sewn. It makes it easier to keep track of the orientation they are sewn.

There are a lot of seams. Double check your seam allowance.



Press your seams open. Keep working each row sewing one triangle on at a time and pressing seams open. Line up the next triangle with the previous triangles points.



I used different background fabrics. I think I like it. I am still deciding. Sew your rows together. I made sure the ends matched and hoped for the best. It turned out just fine 😊

Once you have your top rows made and your bottom rows together it's time to applique your stems on.



I didn't have a bias tape maker. I folded my stem in half, opened it up and folded each side to the center. Press. I used my glue pen to stick the stems where I wanted and topstitched them down.



Now sew your top to the bottom half. Trim to 12.5" (Mine is not trimmed yet)



Ben Franklin® Crafts & Frame Shop

MONROE LOCATION:
19505 Hwy 2, Monroe, WA, 98272
360-794-6745 | www.bfranklincrafts.com



